

MODEL NO : XL534URC

4 . 8MM STRAW RED LED

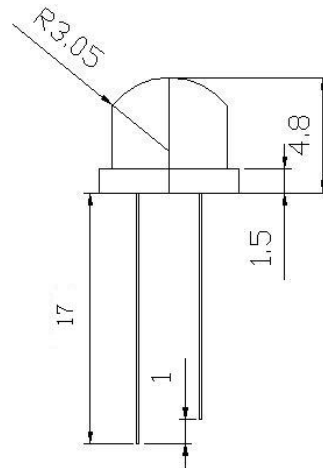
Specification for Approval

● Feature

- Water clear type
- 5mm round standard directivity
- superior weather-resistance
- high radiant intensity

● Applications

- Up to electronic switch
- Computer Mouse
- Digital read out lamps
- Audio equipment
- Backlight



■ Notes

1. All dimensions are in millimeter.
2. Protruded resin under flange 1.5mm Max
3. Lead spacing is measured where the lead emerge from the package.
4. lens color : Water clear.
5. Above specification may be changed without notice . Our company will reserve authority on material change for above specification.
6. These specification sheets include materials protected under copyright of SEALAND ELECTRONIC.

MODEL NO : XL534URC

4 . 8MM STRAW RED LED

Specification for Approval

PART NO	CHIP	LENS COLOR
	MATERIAL	
RED	GaP	WATER CLEAR

Directivity

■ **Absolute Maximum Rating** (Ta=25)

Item	Symbol	Value	Unit
DC forward current	I _F	20	mA
Pulse forward current	I _{FP}	1.00	A
Power dissipation	P _D	100	mW
Operating temperature	T _{opr}	-40~+85	
Storage temperature	T _{stg}	-40~+80	
Reverse voltage	V _R	5	V
Sold soldering temperature	T _{sol}	260 /3Sec	---

Plus with Max 10ms,duty ratio max 1/10

■ **Initial Electrical/Optical Characteristics** (Ta=25)

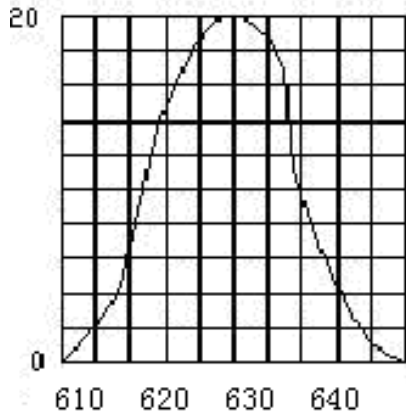
Item	Symbol	condition	Min	Type	Max	Unit
DC forward Voltage	V _F	I=20mA	1.9	2.1	2.4	V
DC reverse Current	I _R	V=5V	----	----	5	μ A
Dome Wavelength	W _D	I=20mA	620	625	630	Nm
Spectrum Radiation Bandwidth		I=20mA	----	20	----	Nm
Luminous Intensity	I _v	I=20mA	500	600	800	mcd
50%Power Angle	2 1/2	I=20mA	----	120	----	deg

MODEL NO : XL534URC
4 . 8MM STRAW RED LED

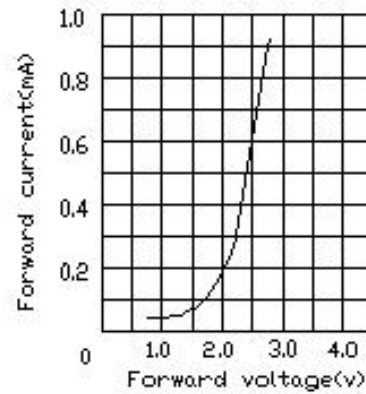
Specification for Approval

● Typical Electro-Optical Characteristics Curves

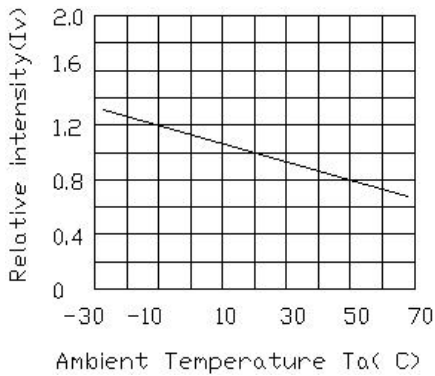
1.Luminous spectrum



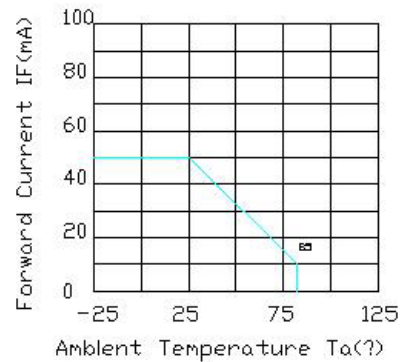
2.Forward current Vs.Forward voltage



3.Relative Intensity Vs.Ambient Temperature



4.Forward Current Derating curve



5.Relative Luminous Intensity Vs. Forward Current

